

101 COPENHAGEN PRESENTS

ARTISTRY MEETS INNOVATION:
A FUSION OF ICONIC ERAS AND
MODERN CRAFTSMANSHIP

MAGAZINE



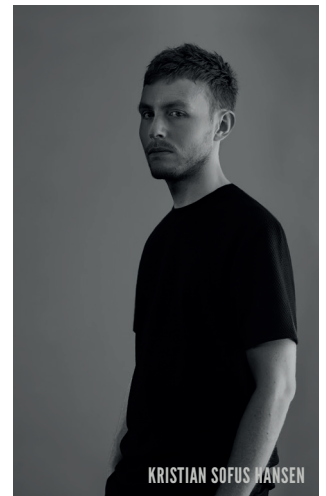
OVER THE PAST YEAR, WE'VE POURED OUR HEARTS AND SOULS INTO CREATING CAPTIVATING VISUALS, CURATING A WEEKLY GALLERY OF BEAUTY AND INSPIRATION. NOW, WE'RE THRILLED TO ANNOUNCE THE CULMINATION OF THIS JOURNEY: AN EXQUISITE MAGAZINE THAT'S A TESTAMENT TO INSPIRATION ITSELF. OUR DESIGN ETHOS IS DEEPLY ROOTED IN THE RICH, MINIMALISTIC ELEGANCE OF SCANDINAVIAN INFLUENCES, MARRIED BEAUTIFULLY WITH THE BOLD, UNAPOLOGETIC LINES OF BRUTALIST ARCHITECTURE AND THE SERENE HARMONY OF JAPANESE AESTHETICS. THIS UNIQUE FUSION OF SHARP GEOMETRIC FORMS AND ARTISTIC FLAIR ALLOWS FOR A VERSATILE STYLING EXPERIENCE, SEAMLESSLY INTEGRATING WITH VARIOUS ARCHITECTURAL BACKDROPS OF YOUR HOME WHILE MAINTAINING A COHESIVE INTERIOR NARRATIVE. OUR MAGAZINE IS NOT JUST A COLLECTION OF IMAGES; IT'S AN ODYSSEY OF STYLE, OFFERING A PLETHORA OF DECORATING IDEAS AND SHOWCASING HOW OUR PRODUCTS CAN TRANSFORM YOUR SPACE. GET READY TO EMBARK ON THIS VISUAL VOYAGE, AND WE HOPE EACH PAGE BRINGS A BURST OF INSPIRATION AND JOY TO YOUR READING EXPERIENCE.





ZEN-INSPIRED COMFORT: FOKU LOUNGE CHAIR BY KRISTIAN SOFUS HANSEN & TOMMY HYLDAHL MERGES SCULPTURAL ELEGANCE WITH TRADITIONAL JAPANESE AESTHETICS

FOKU CHAIR is one of the newest addition to the furniture collection and builds upon the sculptural approach to furniture design by Kristian Sofus Hansen and Tommy Hyldahl. From travels in Japan, they found inspiration in the traditional rake tools used in Japanese Zen Gardens for centuries. Foku meaning fork in Japanese, refers to the shape of the rake tools, used to gently create minimalistic lines and waves in the sand of stone gardens. These lines have been reinterpreted into the fluted seat of the Foku chair, using special combinations of foam to ensure a soft and high seating comfort. "We always strive to push the boundaries of shape and sculptural design. But we never compromise on the seating comfort." says Tommy Hyldahl. Foku comes in Off-White Bouclé and Sunproof taupe for resistance to stains, fade-resistant from sunlight and water resistant use.

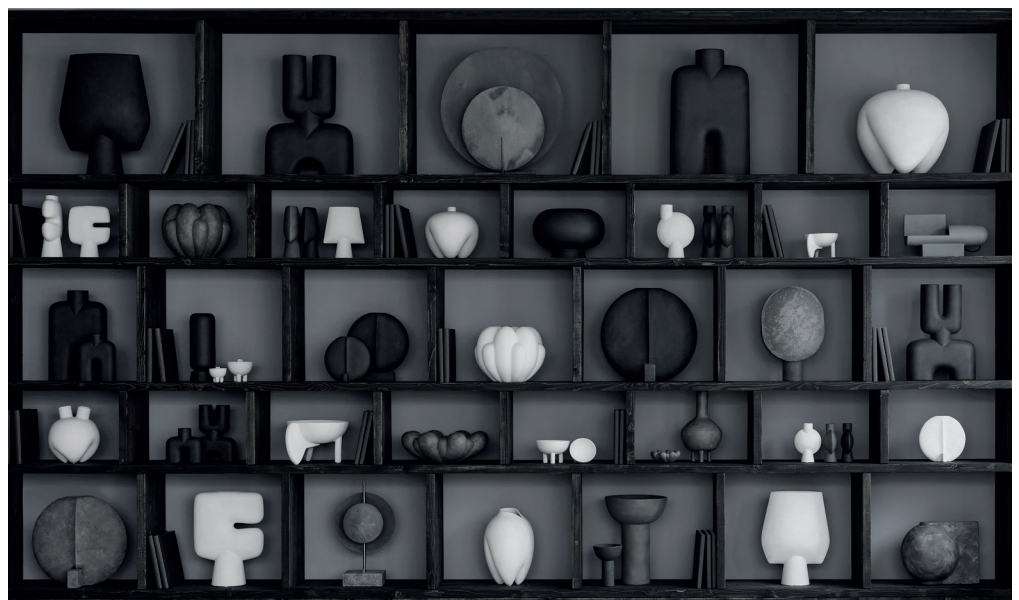


REDEFINED DETAILS AND MONUMENTAL SHAPES ROOTED IN THE SCANDINAVIAN SOIL AND NOURISHED BY JAPANESE MINIMALIST AESTHETICS

101 Copenhagen is a Danish design brand founded in 2017. With a vision to honor exquisite quality and craftsmanship, the collection encompasses furniture, lighting and accessories in a timeless, yet modern design. With a true passion for materials and refined textures, organic shapes and colours, 101 Copenhagen presents the epitome of classics and must-have novelties for Scandinavian and international interior connoisseurs alike. The design of 101 Copenhagen is firmly rooted in the Scandinavian soil and nourished by Japanese minima-

list aesthetics. Sharing an emphasis on quality materials, techniques and traditions, the meeting between the North and the East is notable in the holistic collections of 101 Copenhagen. The design approach is dynamic and characterised by freedom of expression - creating unique and timeless pieces without compromising on playfulness and individuality. An attention to detail and a shared sense of aesthetics is what drives the two main designers of 101 Copenhagen, Tommy Hyldahl and Kristian Sofus Hansen. Merging their backgrounds and

experiences from the fashion industry, the Royal Danish Academy of Fine Arts and travels in Japan respectively, a narrative of minimalist, sculptural and conceptual design is evident throughout the collections. Translating and transforming the simplistic inspiration from Japan in a Scandinavian context is all about honouring quality, heritage and materiality while never seizing to compromise on form and function. 101 Copenhagen is a curated selection of tactile, bold objects standing out in a crowd and gathers as a whole.

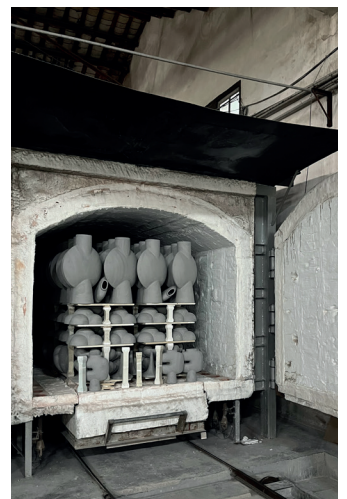




HANDCRAFTED MANUFACTURING PROCESS IS A METICULOUSLY CRAFTED JOURNEY THAT LENDS EACH PIECE OF FURNITURE AND VASE ITS OWN UNIQUE PERSONALITY.

Our handcrafted manufacturing process is a meticulously crafted journey that lends each piece of furniture and vase its own unique personality. Unlike mass-produced items, where uniformity is the rule, our creations embrace subtle variations and an organic texture that truly set them apart. This not only makes each piece one-of-a-kind but also resonates with discerning customers who appreciate the value of craftsmanship, individuality, and artistic expression in their living spaces. The cornerstone of our products lies in the 'organic roughness' a quality that truly distinguishes our furniture and vases. This natural imperfection arises from slight variations during handcrafting, which is not a drawback, but rather a signature trait that signifies authenticity and artistic

integrity. From inception to completion, our skilled artisans are deeply involved in every step of the process. Each piece undergoes multiple rounds of hand-painting, sanding, and shaping, making it a canvas of intricate artistry rather than just another piece of furniture or decor. This meticulous attention to detail results in characteristic colour schemes and designs that are uniquely our own. For those who seek more than just utility in their purchases, who see their surroundings as an extension of their individuality, our pieces offer that rare combination of form and function where each piece is not just designed but also 'sculpted' to life. These are not mere items of utility but tangible pieces of art, imbued with the touch of the human hand.



THE VISIONARIES BEHIND OUR CREATIONS Founder Tommy Hyldahl and designer Kristian Sofus Hansen is the leading creative force of 101 Copenhagen. Their dedication to merging architectural precision with fashion-savvy trend forecasting, along with their unwavering commitment to form, function and comfort, has given rise to furniture, lighting and objects that exude attitude and relevance. Educated at The Royal Danish Academy of Fine Arts, Kristian Sofus Hansen draws upon his architectural background to shape his design philosophy. His creative process al-

ways begins with a focus on external form, much like the creation of buildings and a commitment to ensure that every furniture, lighting or object exude equal beauty from all angles. Then follows an almost telescopic approach, zooming in to scrutinize every detail. For Kristian, a design piece is not merely functional; it should be a work of art. He crafts each piece meticulously to harmonize aesthetics, durability, and comfort, all while infusing a unique twist. His days as a student in Kyoto in Japan have left a lasting impact on his work, infusing it with a distinct Japanese essence.



For decades, Tommy Hyldahl has been a part of the fashion industry, yet his profound passion for furniture and interior design has always been present. In his design process today, he draws parallels from his time in fashion, where he dedicates a significant amount of his time to trend forecasting. This involves keenly observing and analyzing social currents and trends across industries to understand the needs and behavior of tomorrow. He applies his analytical approach to thoroughly examine trends across diverse industries. He delves deep into research before embarking on product development. Tommy believes in his ideas and lives by the principle of being a first-mover. Just like in the fashion industry, where speed and bold decisions are crucial, it's necessary to act swiftly and trust your creative intuition.





In their creative process, they blend time periods, design directions, cultures, and materials. By combining references from design history with forward-looking perspectives, the designs often evoke a sense of familiarity, but freshly and uniquely, bridging the gap between past and present. Brutalist Architecture from the mid 20th century has been playing a significant role as inspiration for the past years. The characteristic sharp lines and bold geometric shapes are 'softened' to create a more contemporary aesthetic with increased comfort and functionality.



Similar to Kristian, Tommy finds particular inspiration in Japanese design. Throughout his life, he has traveled extensively across East and Southeast Asia. This has influenced the 101 Copenhagen design philosophy with a Wabi Sabi approach, emphasizing a commitment to infusing life into each material. This is significantly visible in the materials and color palette of muted earth tones and brushed mat surfaces. Whether it's ceramic, concrete or metal, each surface is particularly 'a live' with a rich texture and depth. Achieved by several layers of handmade painting and brushing, each piece is unique.

THE ART OF BRUTALIST FURNITURE IN HARMONIOUS NATURE'S PALETTE. In the realm of minimalist elegance, our brutalist furniture stands as a testament to the beauty of simplicity. Each piece, embodying the essence of nature's palette, invites a harmonious blend of warmth and artistic flair into your home. Our carefully curated collections, resonating with the colors of the earth, offer the unique flexibility to craft spaces that range from a cozy, warm haven to a chic, monochrome sanctuary. Embrace the art of understated luxury, where each item weaves a story of serene beauty, transforming your home into a canvas of timeless style.





TIMELESS AND ENCHANTING APPROACH TO DECORATION

101 Copenhagen embraces a timeless and enchanting approach to decoration, drawing inspiration from the serene art of Japanese bonsai. This method is not just a style, it's a journey through nature's splendor. Imagine wandering through the tranquil forest, where each fallen branch tells its own story. These branches, once part of the forest's symphony, are lovingly gathered and brought back to breathe new life into the showroom. There, they are adorned with preserved leaves, creating a harmonious blend of elegance and sustainability. This practice is a beautiful homage to the Japanese bonsai, where the essence of a tree is captured in a bowl, symbolizing harmony, peace, and balance. By reusing leaves and branches, this method becomes a cycle of renewal and respect for nature, allowing the beauty of the forest to flourish eternally in our spaces. This is not just decoration; it's a celebration of life, an ode to the enduring spirit of the natural world, and a testament to the art of sustainable beauty.



THE NEW COLLECTION The new collection is a captivating showcase of a diverse innovative furniture, lighting, and ceramic designs, each of which draws inspiration from various artistic and design movements, spanning the 70s, 80s and beyond. These designs exemplify a fusion of art and functionality, with a strong emphasis on aesthetics and creative craftsmanship. Dive into the new Toe Chair Flat, which does not only provide luxurious seating comfort but also captures the essence of 70s futuristic design and space-age aesthetics. Its sculptural approach to furniture design results in a smooth and soft cocooning effect around the body. The chair is available in two upholstery variations, each offering a distinct look and feel.



This curated collection of designs not only serves practical purposes but also showcases an artful fusion of creativity, craftsmanship, and an unwavering commitment to both form and function. Whether drawing inspiration from past decades or contemporary artistic influences, each piece tells a unique story of aesthetic excellence and a devotion to creating visually striking and functional interior spaces.



Rising from the ground like an architectural façade, the Temple coffee table plays with tactile and polished surfaces. Made from sand-colored limestone, each table comprises two staggered blocks, showcasing the beauty of natural stones with small holes and imperfections. Use the tables for various purposes, from coffee tables to plinths for object exhibitions.



EMBRACE THE SERENE BEAUTY OF MONOCHROMATIC ELEGANCE.

Our abode, a symphony in shades of white, harmonizes with the exquisite texture of boucle furniture, creating a cocoon of comfort and style. Imagine walls that whisper tales of sophistication, adorned with dark, captivating artworks, each piece a gateway to a world of artistic wonder. At the heart, a brutalist dining table stands proud, flanked by chairs that echo an unspoken promise of memorable gatherings. Above, neon lights dance, infusing the space with a vibrant energy that stirs the soul. Let this space be your muse, a canvas where simplicity meets splendor. May you find inspiration in every corner, just as we have in creating this haven of minimalist luxury.







IN A WORLD WHERE SIMPLICITY SPEAKS VOLUMES, THIS BEAUTIFUL HOME STANDS AS A TESTAMENT TO MINIMALIST ELEGANCE. It's not about having more; it's about having meaning. Here, soft light cascades through the space, playing off the gentle curves and plush textures of bouclé fabrics, creating an atmosphere of serene tranquility. The interior, a symphony of soft hues and coffee-colored elements, is punctuated by bold black accents, crafting a space that's not just a home, but a sanctuary. Every piece, carefully chosen, echoes a story of comfort and style. The result is a space that doesn't just look beautiful, it feels beautiful - a deliciously feminine and relaxing surroundings where the hustle of the outside world fades away, leaving only peace and serenity. This home is more than an abode; it's a canvas where minimalism and warmth dance in perfect harmony, proving that sometimes, less truly is more.





EXPLORE THE TIMELESS BEAUTY OF ARCHITECTURE THROUGH OUR VERSATILE PRODUCTS.

We embrace a rich tapestry of architectural periods, celebrating the diversity that makes each era unique. Our creations effortlessly blend into any design, harmonizing with the essence of modernist style kitchens. Behold the "Kami" vases, exquisite in their simplicity, gracing your kitchen table with elegance. Their presence is a testament to the fusion of art and function, a hallmark of modernism. As the light spills from our art deco inspired lamp, it casts a warm glow, creating an atmosphere that transcends time.





In a world filled with ever-changing trends, our products remain steadfast companions, adaptable to the evolving landscapes of design. Embrace the past, celebrate the present, and let our creations be the bridge that connects the threads of architectural history. Dare to dream, create, and transform your space into a canvas where the past and the present unite in perfect harmony.



WABI-SABI, A PROFOUND JAPANESE CONCEPT ROOTED IN SIMPLICITY AND AUTHENTICITY, CELEBRATES THE INHERENT BEAUTY OF IMPERFECTION. It's an art of finding elegance in natural materials, embracing nobility without excessive sophistication, and cherishing timelessness while honoring tradition. These principles guide us on a journey through breathtaking images. Our surroundings are a testament to the wisdom of wabi philosophies, illustrating how to craft tranquil, harmonious spaces where beauty is distilled to its purest essence. Within these settings, our "pillar" tables, "drop" chandelier, and Pearl series lamps, adorned with exquisite brass shades, come to life, imbuing the atmosphere with an aura of opulence.





As you immerse yourself in these enchanting spaces, remember that perfection lies not in flawlessness but in the acceptance of life's natural idiosyncrasies. Let the essence of Wabi-Sabi inspire you to embrace authenticity, simplicity, and the timeless allure of tradition. In this world of imperfection, we discover the truest form of beauty.



EMBRACE THE SOOTHING EMBRACE OF NATURE'S PALETTE.

Mix and match earthy tones like moss, coffee, beige, sand, and bone white to weave a tapestry of tranquility and warmth in your surroundings. Let mossy greens infuse vitality, while coffee hues ground you in strength. Beige and sand whisper serenity, and bone white offers a canvas for your dreams.







THE ART OF MINIMALIST STYLING Transforming your space with minimalist styling is not just about simplicity, it's a journey towards tranquility. Imagine our furniture and lamps as silent storytellers, where each piece, whether bathed in earthy hues like coffee or kissed by the subtle sheen of brass, becomes a chapter in a tale of warmth and welcome. These colors don't just fill a room; they create an ambiance, a sanctuary where minimalism meets soul. This is where style meets substance, where every element harmonizes to craft an inviting atmosphere that remains true to the serene essence of minimalism.



BLEND AND BALANCE WITH HARMONY At the heart of our design philosophy is the belief that furniture should not just fill a space, but transform it. We revel in the art of mix-and-match, creating an alchemy of aesthetics that breathes new life into every corner.





Imagine, as in this cherished home, where hues of Sand, Bone White, and Coffee converge. It's more than just a combination of colors; it's the crafting of an ambiance. The result is a tapestry of tones, yielding a light, warm, and inviting atmosphere. Here, every piece tells a story, and together, they sing a harmonious melody of comfort and style. Discover the joy of reinventing your space, where every arrangement opens the door to a new realm of possibilities.



IN THE WORLD OF DESIGN, SIMPLICITY CAN BE A PROFOUND STATEMENT. Our passion lies in creating interiors that are cool and effortlessly chic. We believe in spaces where our products are not just functional but elevated to the status of sculptures, capturing the essence of art. Picture them, our creations, standing tall and proud in an art gallery, bathed in the soft glow of admiration. Each piece tells a story, a testament to the artistry and craftsmanship that goes into our work. Our Drop chandelier, a masterpiece of light and form, delicately hovers above a dining table, creating a mesmerizing dance of shadows and elegance.

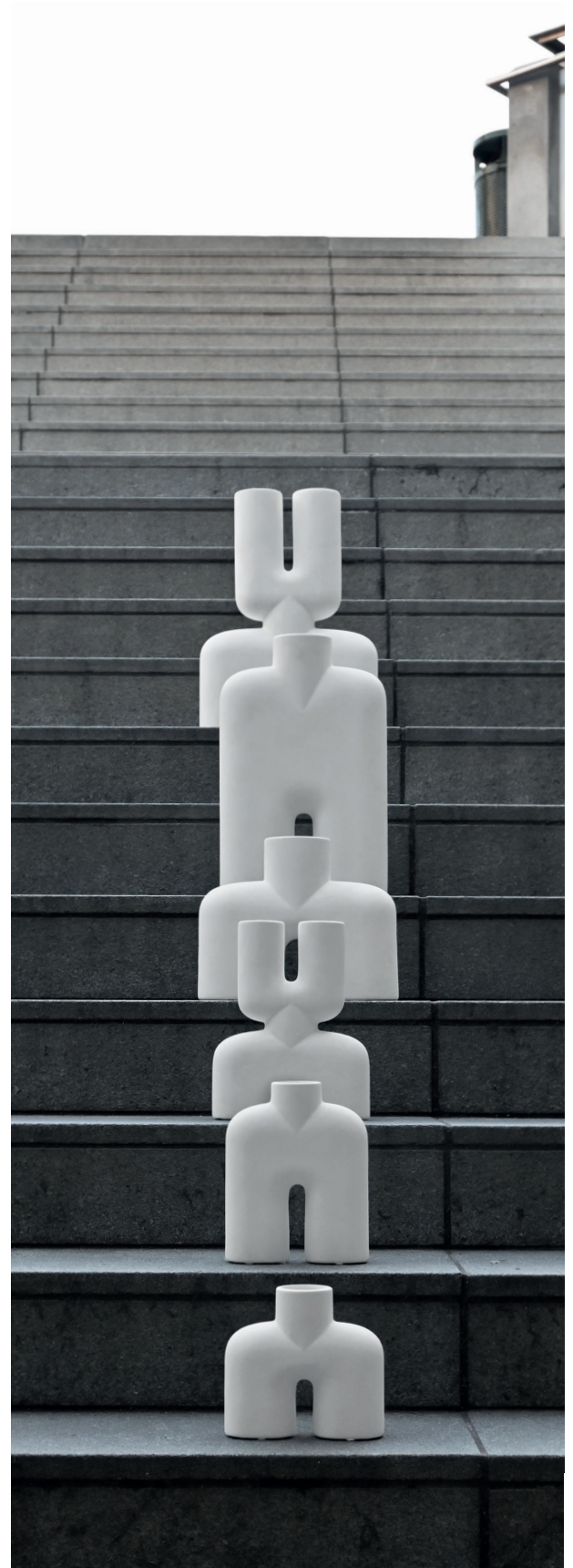




In the heart of Paris, amidst the timeless beauty of a charming apartment, our vision comes to life. Our Brutus dining chairs are more than just furniture; they are a study in minimalism, a celebration of clean lines and functionality. Every curve, every angle, thoughtfully designed to blend seamlessly into the space. It's in this fusion of simplicity and sophistication that our passion thrives. We find inspiration in the marriage of form and function, in the way a room can transform into a gallery, a home into a masterpiece. Our goal is to inspire you to create spaces that resonate with your soul, where every piece exudes artistry and elegance.



GREY AND BONE WHITE, A SYMPHONY OF ELEGANCE AND SIMPLICITY. These two colors, when combined in vases or lamps, create a timeless and inspiring aesthetic. The soft, muted tones of grey blend harmoniously with the purity of bone white, giving any space a sense of serenity and sophistication.







THIS MIDNIGHT BLUE BEDROOM IS AN ENCHANTING SANCTUARY, WHERE SERENITY MEETS VIBRANCY. The deep, mysterious hue of the walls cradles our neon lamps, casting a gentle, ethereal glow that transforms the room into a haven of tranquility. In this harmonious fusion of darkness and light, we find the ideal backdrop for a serene and cozy ambiance. It's a reminder that even in the darkest moments, a glimmer of brightness can create a comforting oasis. Embrace the beauty of contrasts, and let this midnight masterpiece inspire you to find peace within the shadows and comfort in the light.



EMBRACE THE ESSENCE OF SIMPLICITY In the heart of a bustling world, we stand as enthusiasts of minimalism, advocating for a lifestyle that speaks volumes through its serene simplicity. Our journey is not just about decorating spaces; it's about curating sanctuaries. We invite you to explore the tranquil elegance of a minimalist home, thoughtfully adorned in hues of white and grey. This monochromatic palette isn't just a design choice—it's a reflection of a mindset, a silent rebellion against the chaos of the everyday.





Within these shades of simplicity, each element is a deliberate stroke of calm, a piece of a puzzle that fits perfectly to create a harmonious whole. Here, less is more than a mantra; it's a pathway to tranquility. As you embark on this journey with us, discover how every minimalist detail can resonate with your soul, turning a mere space into a haven of peace. Let's delve into the world of minimalism, where every shade of white and grey holds a story, waiting to transform your home into a bastion of serene beauty.





STEP INTO A WORLD WHERE THE ELEGANCE OF MID-CENTURY DESIGN MEETS THE COMFORT OF MODERN LIVING. This apartment is a timeless blend of styles, a symphony of past and present. As you wander through its inviting spaces, you'll find yourself enchanted by the warmth of mid-century charm and the sophistication of contemporary minimalism.



JAPANDI STYLE, A HARMONIOUS FUSION OF JAPANESE SIMPLICITY AND SCANDINAVIAN MINIMALISM, HAS CAPTURED OUR HEARTS.

The earthy, burnt colors that define this aesthetic resonate deeply with us. They speak of warmth, tranquility, and a connection to nature that we find truly inspiring.



In this home, every piece of furniture, every lamp, and each ceramic piece has been chosen with meticulous care. We've created a haven of balance and serenity, where functionality and beauty coexist seamlessly. Japandi style allows us to celebrate the essence of less-is-more, where every item serves a purpose and brings joy.





TRANSFORM YOUR LIVING SPACE WITH THE RAW, INDUSTRIAL CHARM OF OXIDIZED METAL LAMPS. These statement pieces are more than just lighting fixtures; they're a testament to the fusion of rugged strength and subtle elegance. In a world filled with excess, they remind us that simplicity can be striking. The oxidized metal finish adds depth and character, a story etched into their very essence. These lamps don't just illuminate; they radiate authenticity. They harmonize effortlessly with soft, minimalistic interiors, creating a striking contrast that draws the eye and captivates the soul.



THIS LOFT APARTMENT IS A MASTERPIECE OF ARCHITECTURAL FUSION. IT SHOWCASES THE BEAUTY OF BLENDING DIFFERENT TIME PERIODS SEAMLESSLY. The living room is a testament to this harmonious mix, with its towering columns, expansive windows that invite natural light, and a soaring ceiling that seems to touch the sky. At the heart of this space, we've curated a design that captures the essence of modern elegance. Our beloved "Toe" lounge chair, known for its comfort and style, takes center stage, inviting you to relax and unwind in its embrace. Paired with the "Crown" tables in a pristine bone white, they exude an aura of sophistication and class.



But what truly steals the show is our exquisite "Ghost" chandelier, hanging gracefully from above. It's not just a light fixture; it's a work of art. Its ethereal glow illuminates the room, casting a spell of enchantment and wonder. This loft apartment is a reminder that beauty knows no boundaries. It's a testament to the creative spirit that thrives when different eras collide, yielding a space that is uniquely yours. So, as you step into this sanctuary, let it inspire you to embrace the beauty of diversity, to create, to innovate, and to make your own mark on the world.







TRANSFORMING A DARK INDUSTRIAL LIVING SPACE INTO A HAVEN OF WARMTH AND CREATIVITY CAN BE A TRULY INSPIRING JOURNEY. Imagine the cool, rugged backdrop of steel and concrete softened by the gentle glow of burnt orange accents. Every corner of this living space echoes the message that transformation is possible. With determination, creativity, and a touch of color, we can turn our own lives into masterpieces. The dark industrial backdrop only makes the vibrant accents shine brighter.





EMBRACE TRANQUILITY AND DESIGN WITH THE STINGRAY CHANDELIER GRANDE AND FOKU LOUNGE CHAIRS. Inspiration radiates through our space as the Stingray Chandelier Grande illuminates this stunning hallway. Paired with our Foku chairs cleverly arranged to form a cozy sofa, it invites you to relax and soak in the breathtaking view of water and forest. This fusion of design and nature serves as a reminder that beauty and tranquility are within reach. Let it inspire you to create your own harmonious spaces and cherish the serenity they offer.





SCULPTURAL ELEGANCE Our furniture and ceramic boasts a sculptural elegance that effortlessly stands alone or harmoniously complements each other. This beautifully styled living space showcases the artistry and versatility of our pieces. Embrace the power of design to transform your home into a work of art.





UNVEILING ELEGANCE AND STRENGTH: SUNPROOF FABRIC IN TAUPE.

This year, we unveiled something truly remarkable - Sunproof fabric in the stunning Taupe color. It's not just beautiful; it's practical too. Our Sunproof fabric undergoes a meticulous process, reducing its susceptibility to stains and soil. It's water repellent, thanks to an invisible shield surrounding each fiber, ensuring your furniture stays dry and spotless. But that's not all. Sunproof fabric is your shield against the sun's harsh rays. Say goodbye to UV damage and fading - this fabric stands strong, adding resilience to your furniture. It's built to endure the elements, from rain to sunshine, without fading or mildew.

Our love for this fabric is evident in every setting. It complements all styles and decorations, making it the perfect choice for those who seek both elegance and practicality. Elevate your space with Sunproof - where beauty, strength, and passion come together.







ENDLESS CREATIVITY THRIVES IN THE DELICATE DANCE OF CERAMICS ON OUR SHELVES. The enchanting world of monochrome beckons us, a timeless canvas for our imagination. Each piece tells a story, each arrangement a symphony of style. Embrace the art of mixing and matching, and watch your space come alive with the magic of your own design. Let your passion for design be your guiding light, and let the monochrome vibe be your masterpiece. In this beautiful chaos, you'll find the true essence of your creativity, always evolving, always inspiring.





THE BRUTUS DINING CHAIR A BRUTALIST MASTERPIECE ECHONING IN THE TRANQUIL SERENITY OF A JAPANESE GARDEN IN IBIZA. With its sleek design reminiscent of the Brutalist architecture movement, the Brutus collection has found a new, captivating stage: A serene Japanese garden nestled within the vibrant heart of Ibiza. The Brutus dining chair, anchors the tranquillity of this idyllic setting, with its arresting silhouette effortlessly blending into the aesthetic panorama.



DISCOVER THE ELEGANCE OF BRUTALISM WITH THE BRUTUS DINING AND LOUNGE CHAIR. INSPIRED BY THE MID-20TH CENTURY ARCHITECTURAL MOVEMENT, IT BRINGS A TOUCH OF TIMELESS ARTISTRY TO YOUR SPACE. Imagine the possibilities as you embrace the versatility of this chair. In warm sand color, it exudes a welcoming summer vibe that transcends seasons. Use it as a sculptural masterpiece or gather them around your dining table for an inviting, artistic ambiance. Let Brutus be your canvas to craft an atmosphere of warmth and allure, where summer is eternal and creativity knows no bounds. Elevate your space with the charm of Brutalism – a tribute to the beauty of unconventional design.



IMAGINE TRANSFORM YOUR BEDROOM INTO A SERENE OASIS WITH THE HARMONIOUS FUSION OF JAPANDI STYLE.

Embrace soft earthy colors and gentle fabrics that wrap you in comfort. This space is your sanctuary, a place to unwind and rejuvenate. For a touch of personal flair, consider a simple yet creative bedside decoration. Grab our curve bowl mini and fill it with oasis, creating a natural base. Venture into the beauty of nature to find a fallen branch, a symbol of resilience in the face of change. Secure the branch to the oasis using glue or wire, letting your creation stand tall.

In this tranquil haven, you'll discover the beauty of balance and simplicity. It's not just a bedroom; it's your canvas for relaxation and inspiration. Japandi style invites you to embrace the beauty of the world around you, finding peace in the merging of cultures and the serenity of nature. Create your haven and let it remind you that beauty can be found in the simplest of things, even a fallen branch turned into art.









ELEVATE YOUR DINING EXPERIENCE WITH OUR EXQUISITE DROP CHANDELIER. This stunning fixture is more than just a source of light; it's a work of art that effortlessly transforms your dining area into a captivating masterpiece. As it gracefully hovers above your table, it becomes a radiant statement piece, casting a warm and inviting ambiance that sets the perfect mood for meaningful conversations during dinner. But our passion for aesthetics doesn't stop there. We believe in the power of surrounding yourself with inspiration. That's why we adore adorning our spaces with the timeless beauty of books and the captivating allure of art.





TRANSFORMING SPACES WITH THE ART OF LIGHT: DISCOVER OUR FASCINATION WITH BRUTALIST FURNITURE AND GEOMETRIC VASES.

It's a well-known fact that our passion for brutalist furniture and geometric vases runs deep, as we delight in the way light gracefully dances and transforms their shapes. Take, for instance, our exquisite "Offset" vase, elegantly positioned atop the sleek "Duck tray," or the mesmerizing sight of our brand-new Kami vases, bathed in a gentle, ambient glow while resting on our "Brutus" Tables. Our fascination lies in the art of harnessing the beauty of natural light, an enchanting symphony that continually inspires us.











REDEFINED DETAILS AND MONUMENTAL SHAPES ROOTED IN THE SCANDINAVIAN SOIL AND NOURISHED BY JAPANESE MINIMALIST AESTHETICS.

101 COPENHAGEN is a Danish design brand founded in 2017. With a vision to honor exquisite quality and craftsmanship, the collection encompasses furniture, lighting and accessories in a timeless, yet modern design. With a true passion for materials and refined textures, organic shapes and colours, 101 Copenhagen presents the epitome of classics and must-have novelties for Scandinavian and international interior connoisseurs alike. The design of 101 Copenhagen is firmly rooted in the Scandinavian soil and nourished by Japanese minimalist aesthetics. Sharing an emphasis on quality materials, techniques and traditions, the meeting between the North and the East is notable in the holistic collections of 101 Copenhagen. The design approach is dynamic and characterised by freedom

of expression - creating unique and timeless pieces without compromising on playfulness and individuality. An attention to detail and a shared sense of aesthetics is what drives the two main designers of 101 Copenhagen, Tommy Hyldahl and Kristian Sofus Hansen. Merging their backgrounds and experiences from the fashion industry, the Royal Danish Academy of Fine Arts and travels in Japan respectively, a narrative of minimalist, sculptural and conceptual design is evident throughout the collections. Translating and transforming the simplistic inspiration from Japan in a Scandinavian context is all about honouring quality, heritage and materiality while never seizing to compromise on form and function. 101 Copenhagen is a curated selection of tactile, bold objects standing out in a crowd and gathers as a whole.

SCAN THE QR CODE TO INSTANTLY ACCESS OUR PROFESSIONAL WEBSITE, FEATURING ALL INFORMATION ABOUT 101 COPENHAGEN.

Global sales inquiries:

Support inquiries:

Press inquiries:

SALES@101CPH.COM

SUPPORT@101CPH.COM

PRESS@101CPH.COM

